

# CPC173024-T22

## POLYMER CONCRETE ASSEMBLY

**17" x 30" x 24"** Polymer Concrete Assembly, No Floor, Natural Color Finish, "T22/36K", 3/8" Hex Bolts.

### LOAD RATINGS

Incidental Traffic - Parking Lot, Sidewalk, Complaint to:

- ❖ WUC 3.6
- ❖ ASTM C 857
- ❖ ANSI/SCTE 77

### MATERIAL PROPERTIES AND ATTRIBUTES

#### Vertical Strength

Polymer Concrete - 36500

#### Lateral Strength

Polymer Concrete - 4000 PSI

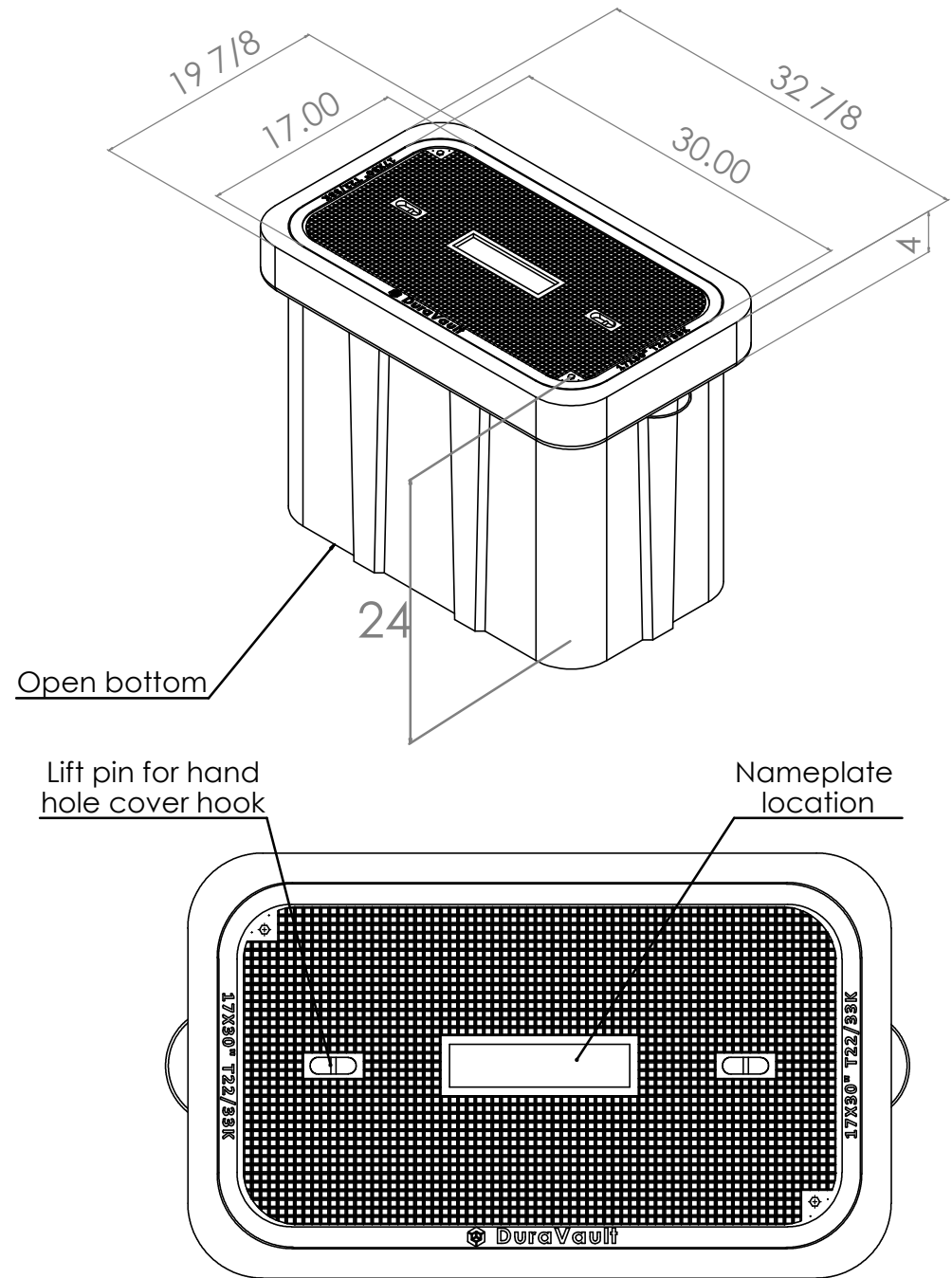
Polymer Concrete material:

- ❖ Advanced composite: Very high strength to weight ratio
- ❖ UV Resistant
- ❖ Impervious to chemicals and moisture
- ❖ Non-conductive
- ❖ High impact resistant
- ❖ Non-metallic

Our Materials have been tested in accordance with ASTM D-543 and ASTM D-570



**DuraVault**  
Built to Last. Engineered to Protect



# CPC173024-T22

## POLYMER CONCRETE ASSEMBLY

Contact us at [Sales@Cescausa.com](mailto:Sales@Cescausa.com) or (887) 712-3722



# DuraVault

Built to Last. Engineered to Protect

### AVAILABLE OPTIONS

### Available Sizes:

- Custom Colors
  - Classic nameplates Available
    - Electric
    - Telephone
    - Fiber Optic
    - Water
    - Broadband
    - Traffic
    - CATV
    - Communications
- 17x30x12
  - 17x30x24
  - 17x30x30

Custom nameplates are available. Contact customer service.

