

CPC173030-T22

POLYMER CONCRETE ASSEMBLY

17" x 30" x 30" Polymer Concrete Assembly, No Floor, Natural Color Finish, "T22/36K", 3/8" Hex Bolts.

LOAD RATINGS

Incidental Traffic - Parking Lot, Sidewalk, Complaint to:

- ❖ WUC 3.6
- ❖ ASTM C 857
- ❖ ANSI/SCTE 77

MATERIAL PROPERTIES AND ATTRIBUTES

Vertical Strength

Polymer Concrete - 36500

Lateral Strength

Polymer Concrete - 4000 PSI

Polymer Concrete material:

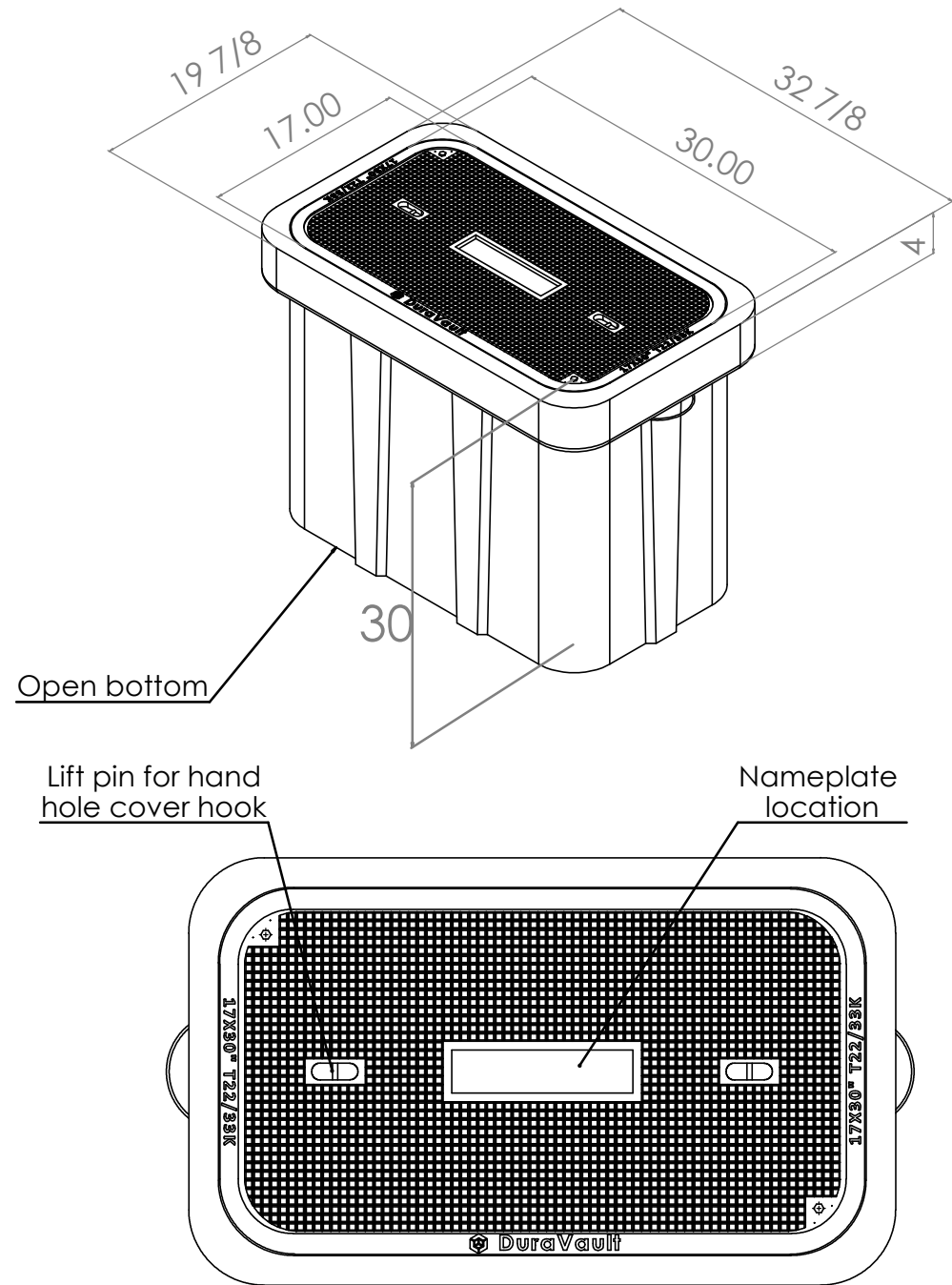
- ❖ Advanced composite: Very high strength to weight ratio
- ❖ UV Resistant
- ❖ Impervious to chemicals and moisture
- ❖ Non-conductive
- ❖ High impact resistant
- ❖ Non-metallic

Our Materials have been tested in accordance with ASTM D-543 and ASTM D-570



DuraVault

Built to Last. Engineered to Protect



CPC173030-T22

POLYMER CONCRETE ASSEMBLY

Contact us at Sales@Cescausa.com or (887) 712-3722



DuraVault

Built to Last. Engineered to Protect

AVAILABLE OPTIONS

Available Sizes:

- Custom Colors
 - Classic nameplates Available
 - Electric
 - Telephone
 - Fiber Optic
 - Water
 - Broadband
 - Traffic
 - CATV
 - Communications
- 17x30x12
 - 17x30x24
 - 17x30x30

Custom nameplates are available. Contact customer service.

